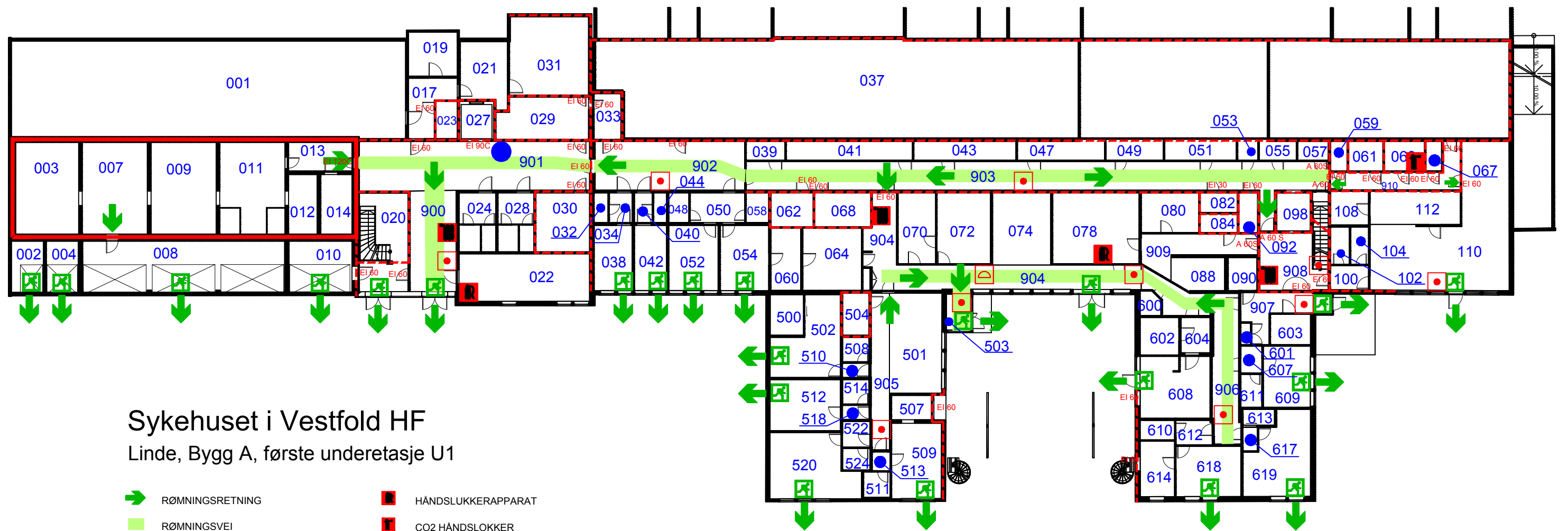














RØMNINGSPLAN



Sykehuset i Vestfold HF
Linde, Bygg A, første underetasje U1

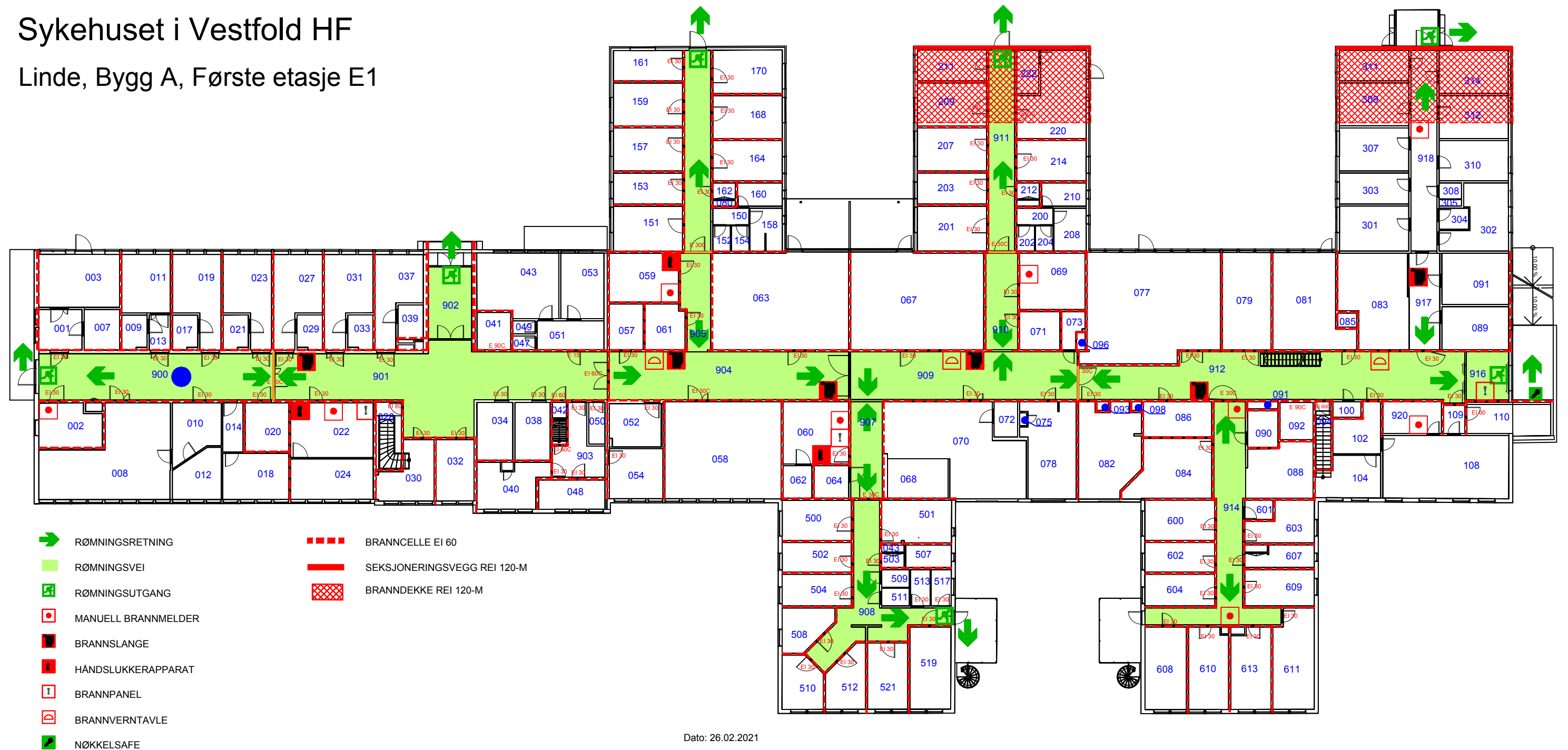
- | | |
|---|---|
|  RØMNINGSPRETNING |  HÅNDSLUKKERAPPARAT |
|  RØMNINGSPVEI |  CO2 HÅNDSLOKKER |
|  RØMNINGSPUTGANG |  BRANNPANEL |
|  MANUELL BRANNMELDER |  BRANNVERNTAVLE |
|  BRANNSLANGE |  BRANNCELLE EI 60 |
|  DU ER HER |  SEKSJONERINGSVEGG REI 120-M |

Dato: 05.03.2021

RØMNINGSPPLAN

Sykehuset i Vestfold HF

Linde, Bygg A, Første etasje E1



Dato: 26.02.2021

● Du står her

RØMNINGSPLAN

Sykehuset i Vestfold HF

Linde, Bygg A, Andre etasje, E2

-  RØMNINGSRETNING
-  RØMNINGSVEI
-  RØMNINGSUTGANG
-  MANUELL BRANNMELDER
-  BRANNSLANGE
-  HÅNDSLUKKERAPPARAT
-  BRANNPANEL
-  BRANNVERTAVLE
-  NØKKELSAFE
-  Du står her
-  BRANNCELLE EI 60
-  SEKSJONERINGSVEGG REI 120-M
-  BRANDEKKE REI 120-M

