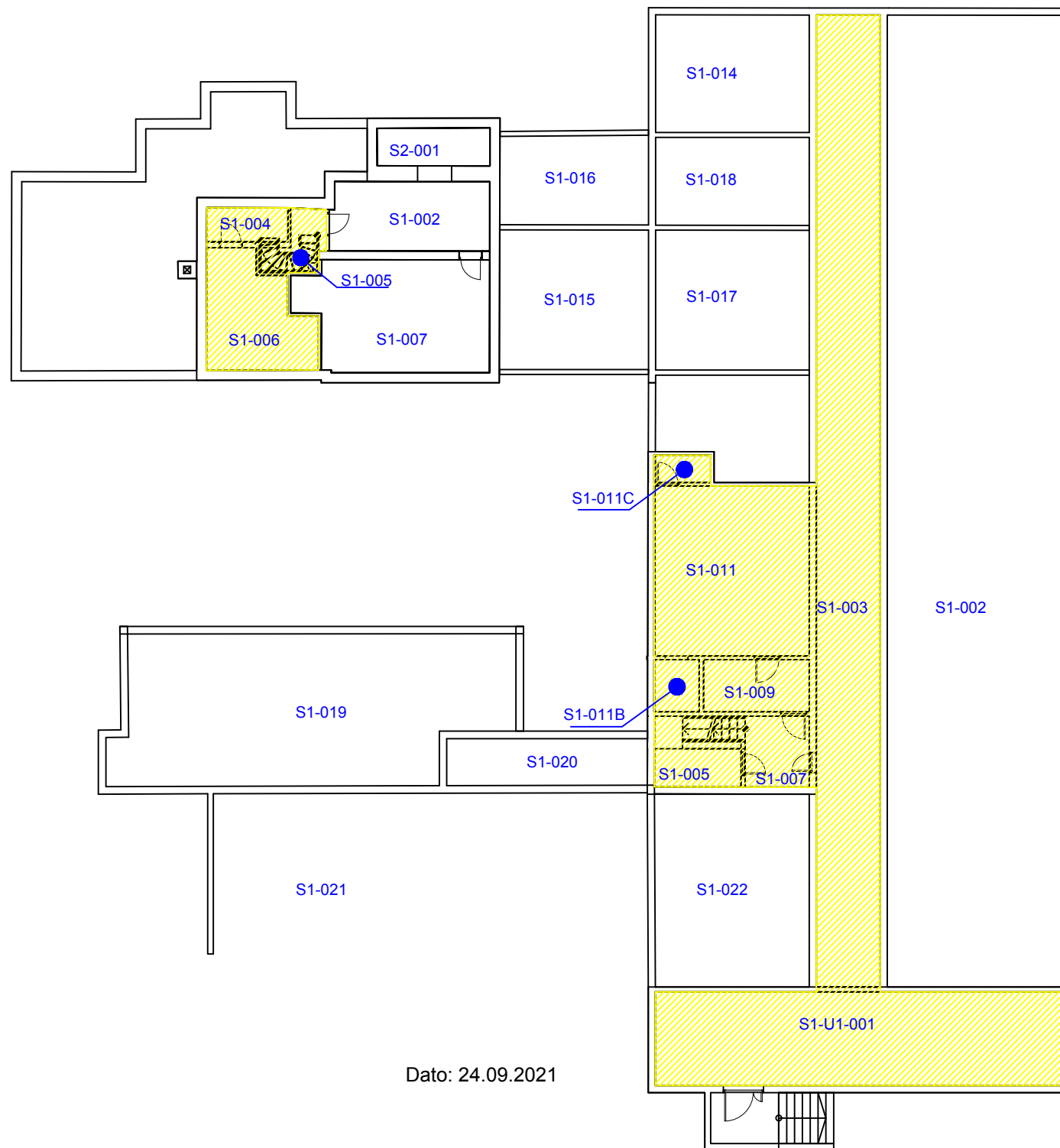


# Sykehuset i Vestfold HF

Bygg S, Kjeller, U1

Brannvernområder:

 Byggteknisk





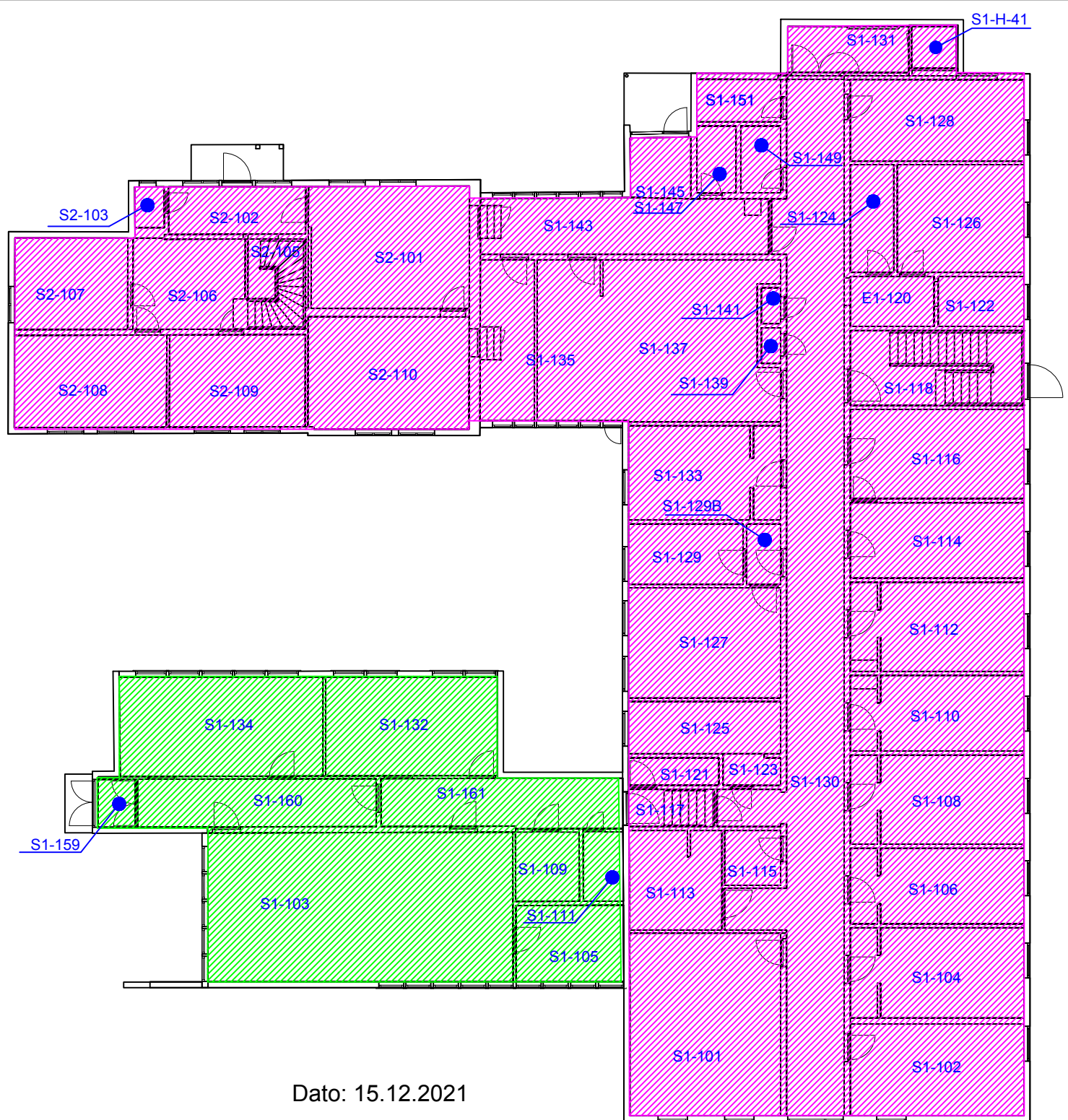
Dato: 24.09.2021

# Sykehuset i Vestfold HF

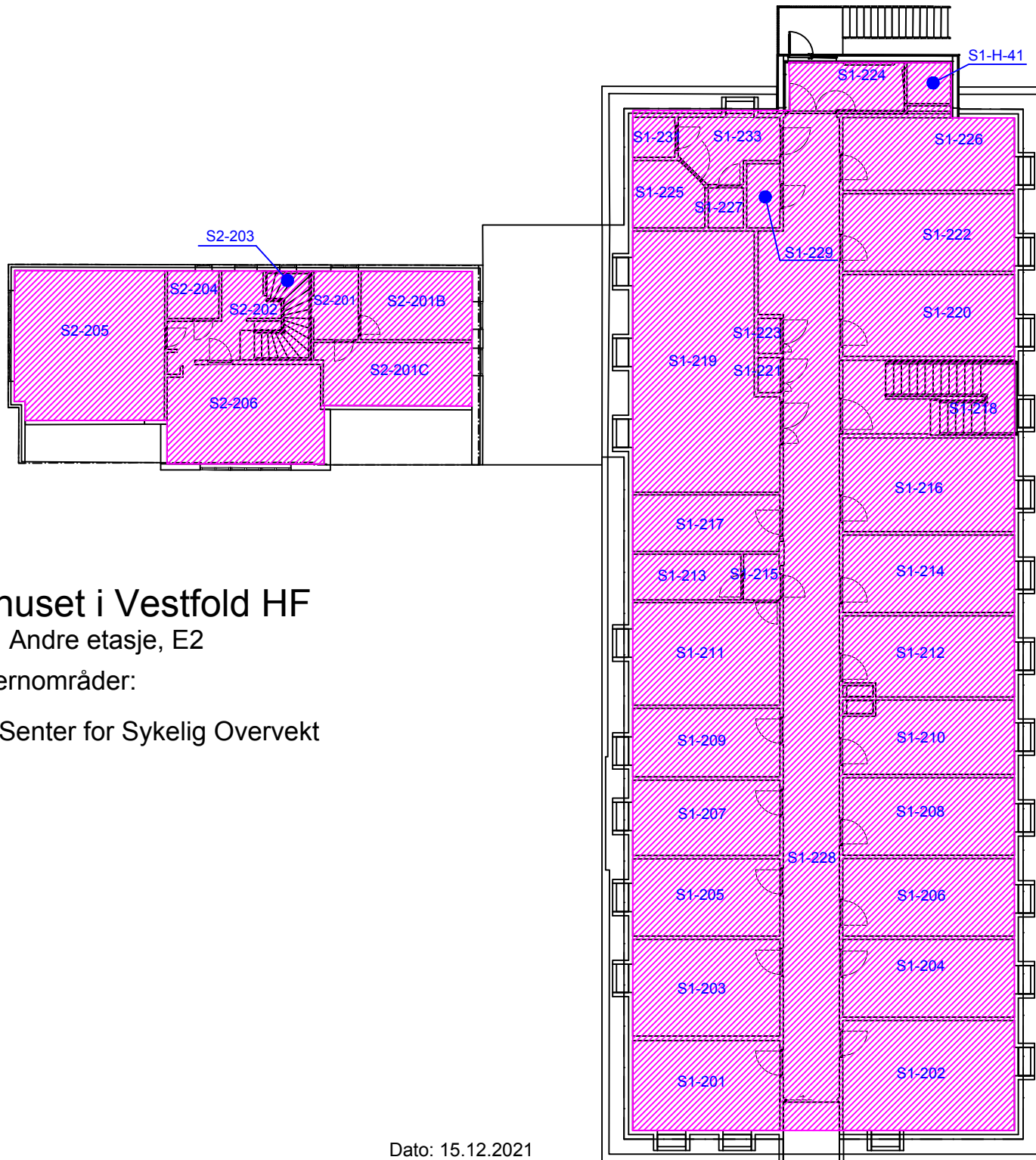
BYGG S, FØRSTE ETASJE, E1

Brannvernomsråder:

-  Undervisningsrom E1
-  Senter for Sykelig Overvekt



Dato: 15.12.2021



# Sykehuset i Vestfold HF

Bygg S, Andre etasje, E2

Brannvernopråder:

 Senter for Sykelig Overvekt