

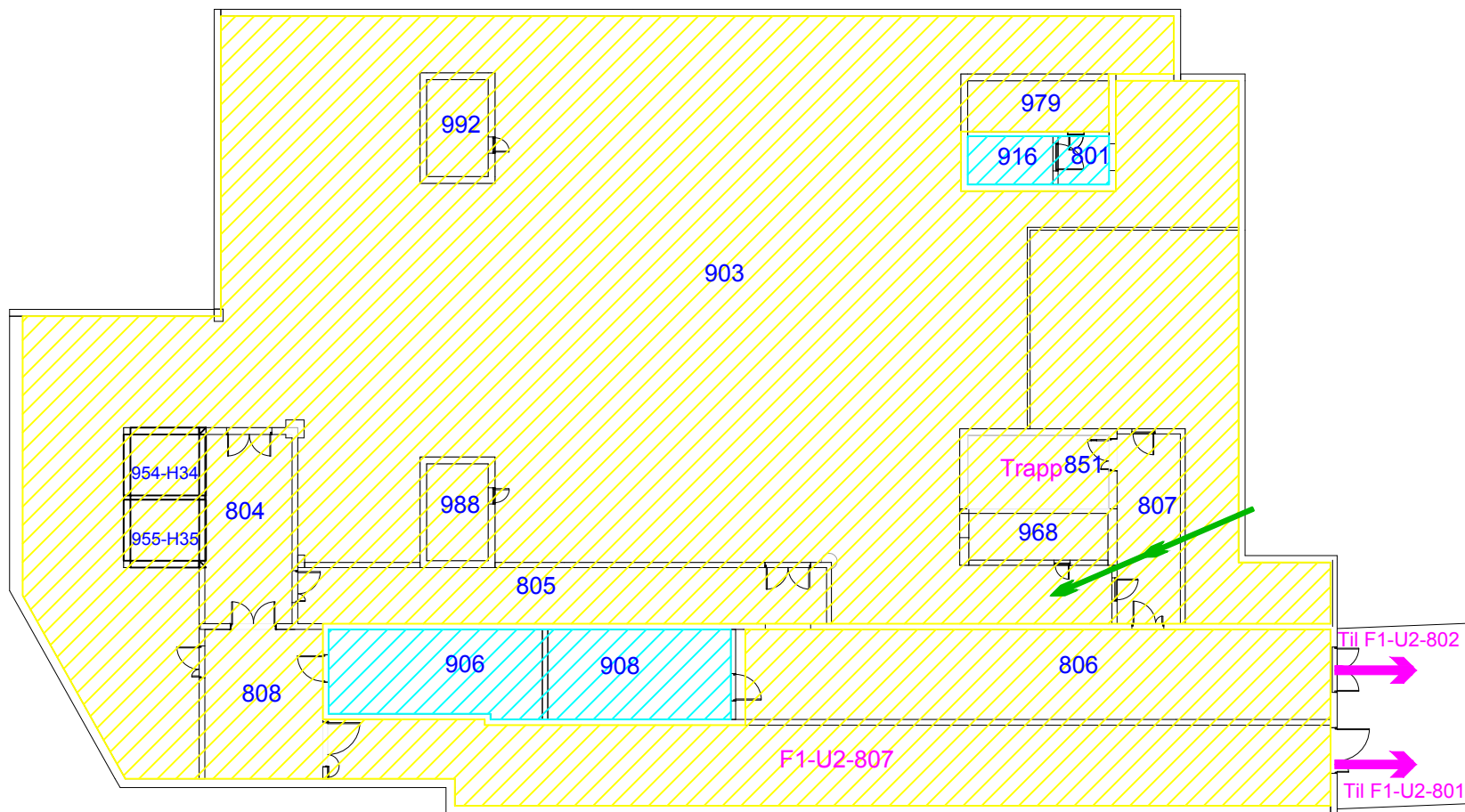
Sykehuset i Vestfold HF

Bygg E, tredje underetasje, U3

Brannvernomsråder:

 Elektroteknisk

 Byggteknisk

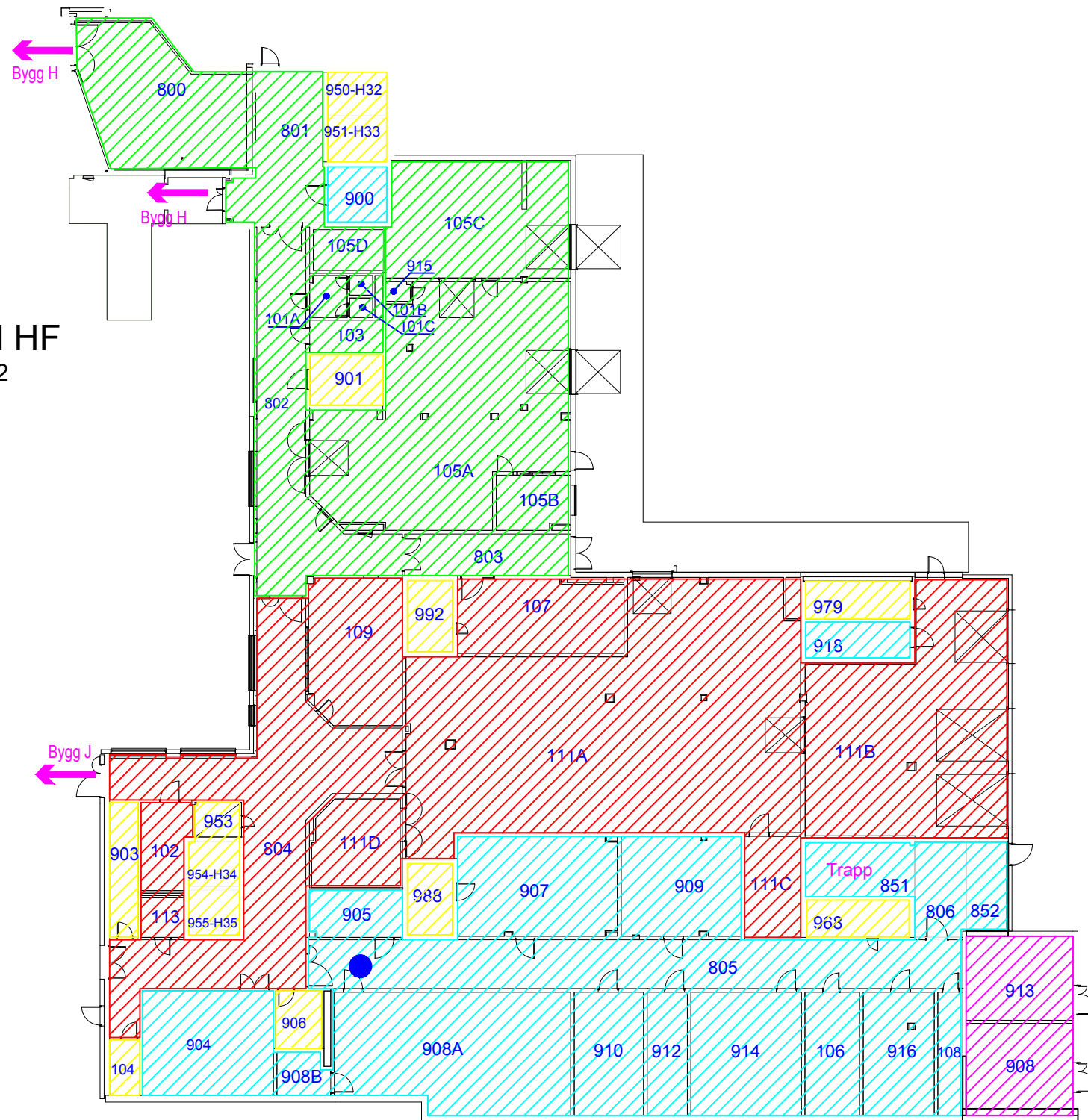


Sykehuset i Vestfold HF

Bygg E, andre underetasje, U2

Brannvernområder:




-  Logistikk-lager
-  Avfall-portør
-  Elektroteknisk
-  Byggteknisk
-  Nettstasjon/Trafo

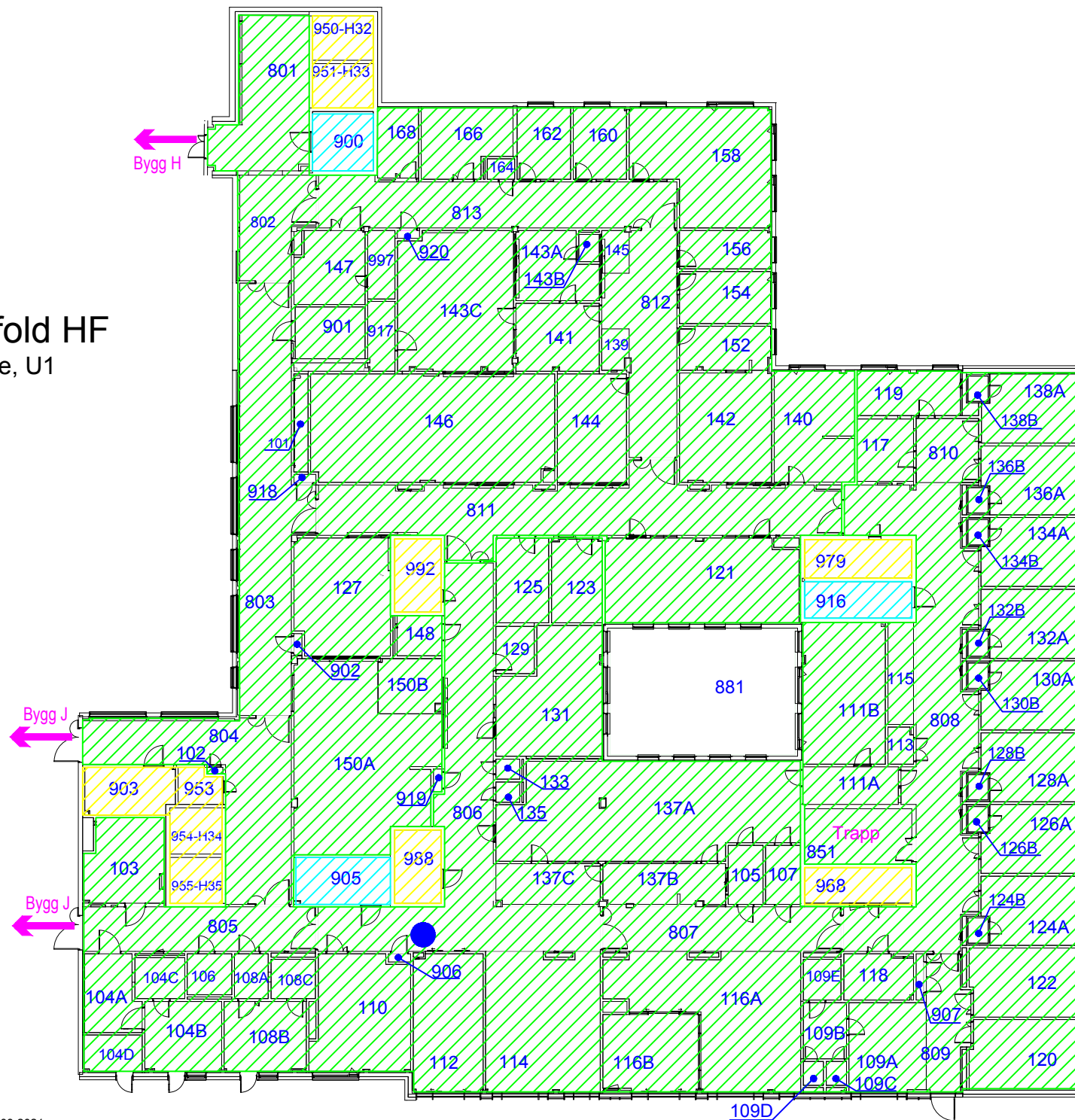


Sykehuset i Vestfold HF

Bygg E, første underetasje, U1

Brannvernomsråder:


-  Akuttsenter - mottak
-  Byggteknisk
-  Elektroteknisk



Sykehuset i Vestfold HF

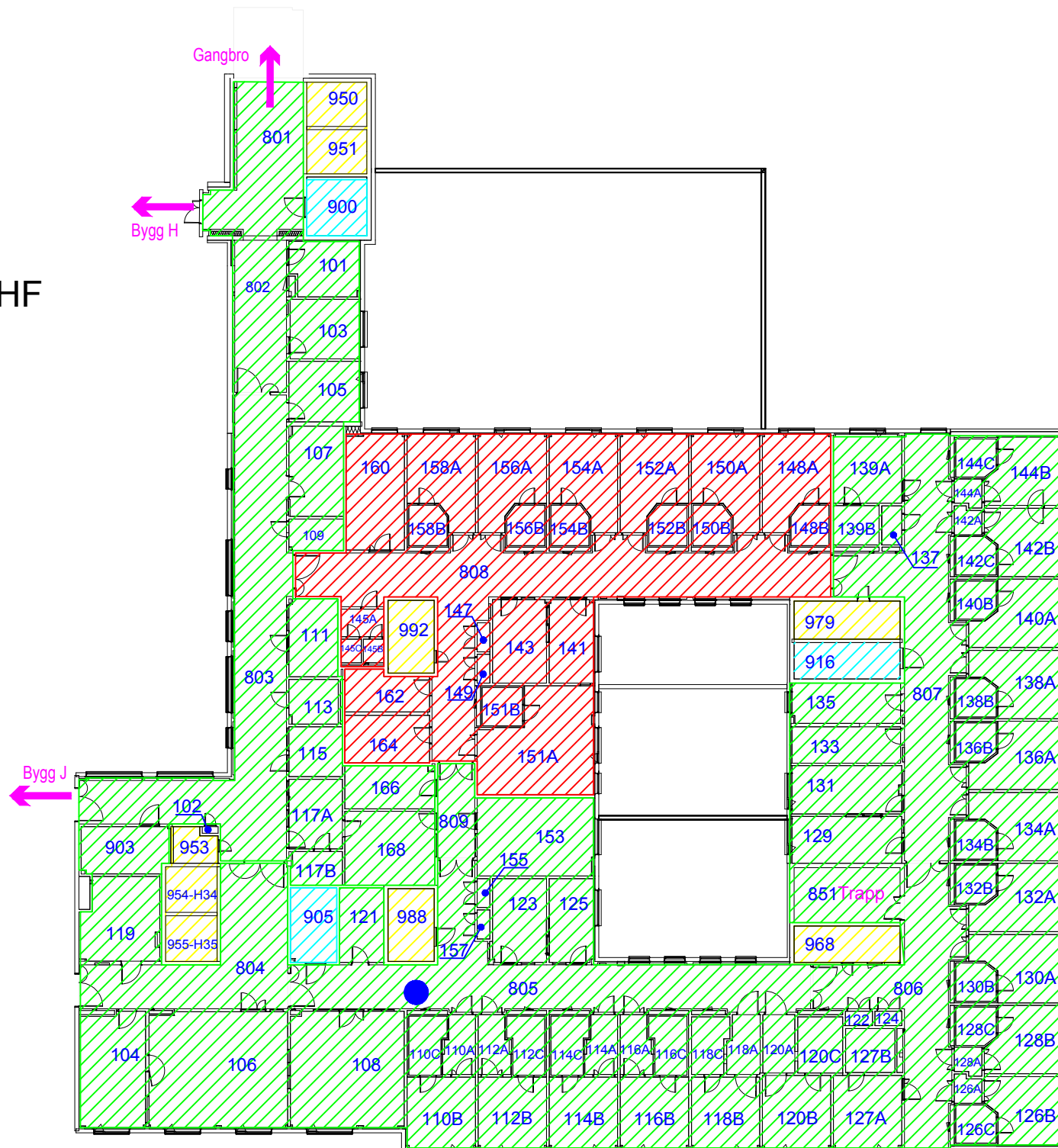
Bygg E, første etasje E1

Brannvernomsråder:

 Barne- og ungdomspost

 Geriatripost

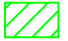


 Byggteknisk



Sykehuset i Vestfold HF

Bygg E, andre etasje E2

Brannvernomsråder:

-  Hjerte- og nyrepost
-  Byggteknisk
-  Elektroteknisk

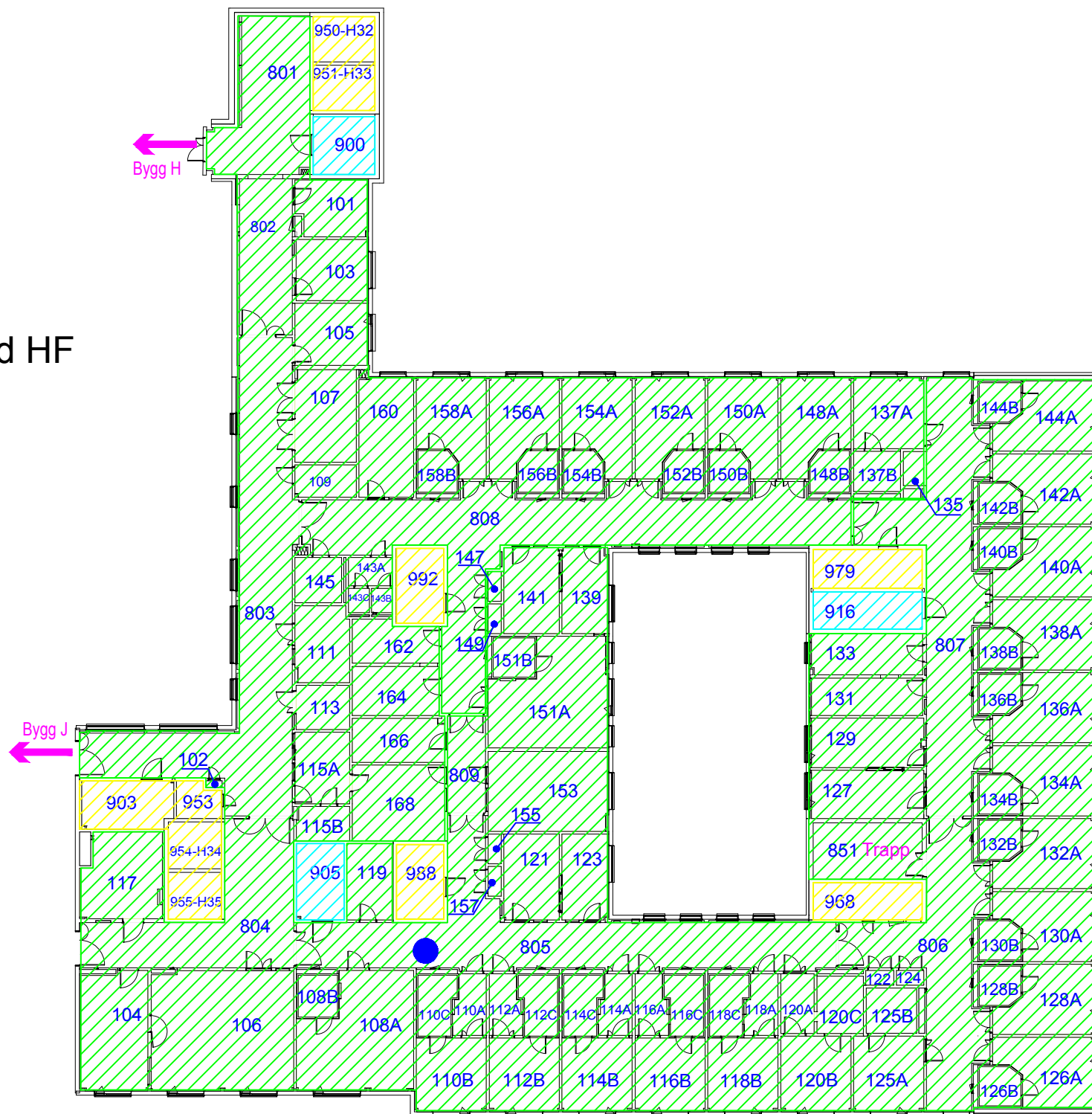


Sykehuset i Vestfold HF

Bygg E, tredje etasje E3

Brannvernomsråder:


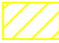

-  Ortopedisk post
-  Byggteknisk
-  Elektroteknisk

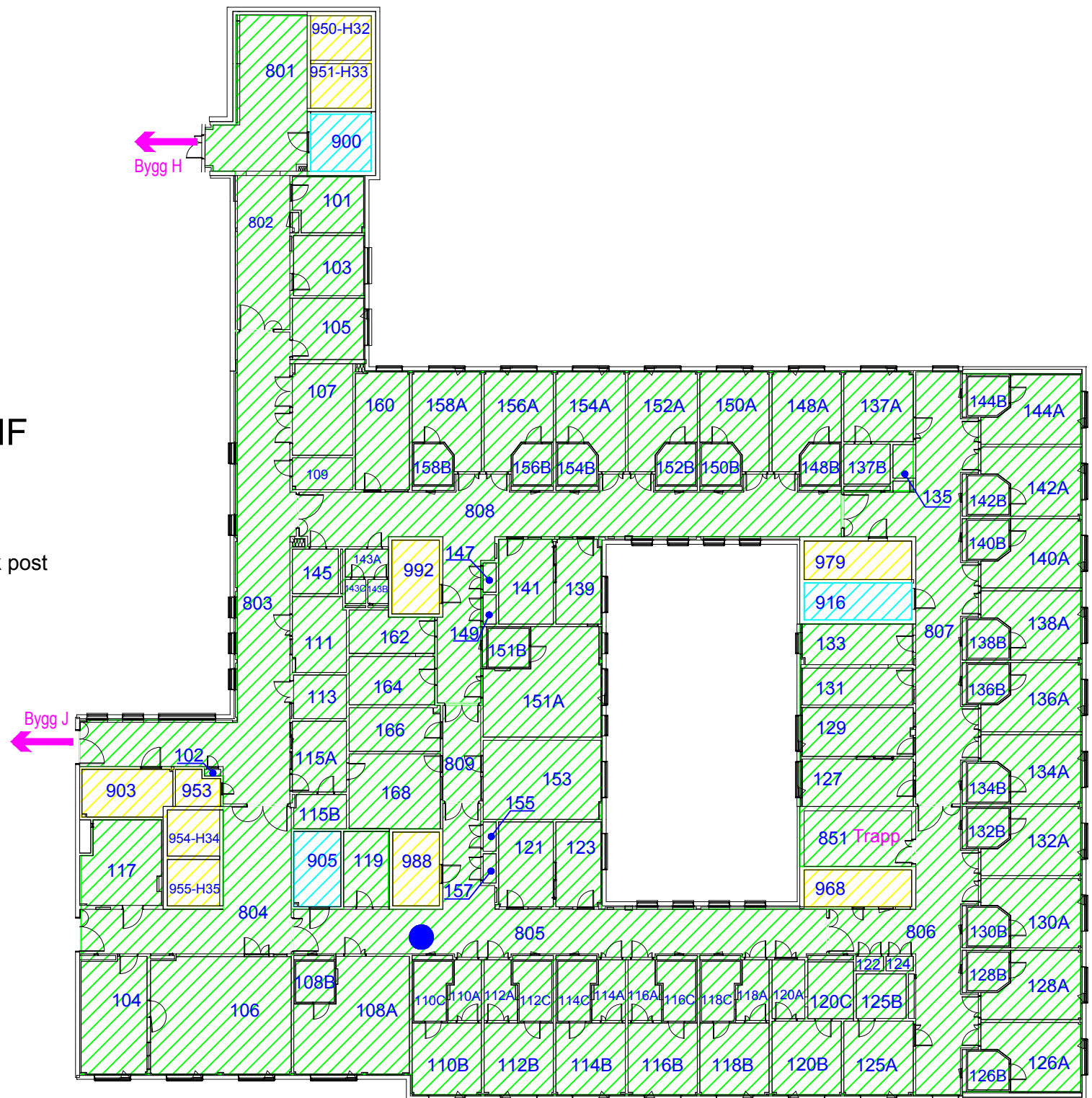


Sykehuset i Vestfold HF

Bygg E, fjerde etasje E4

Brannvernomsråder:

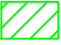


-  Gynekologi- og gastrokirurgisk post
-  Byggteknisk
-  Elektroteknisk

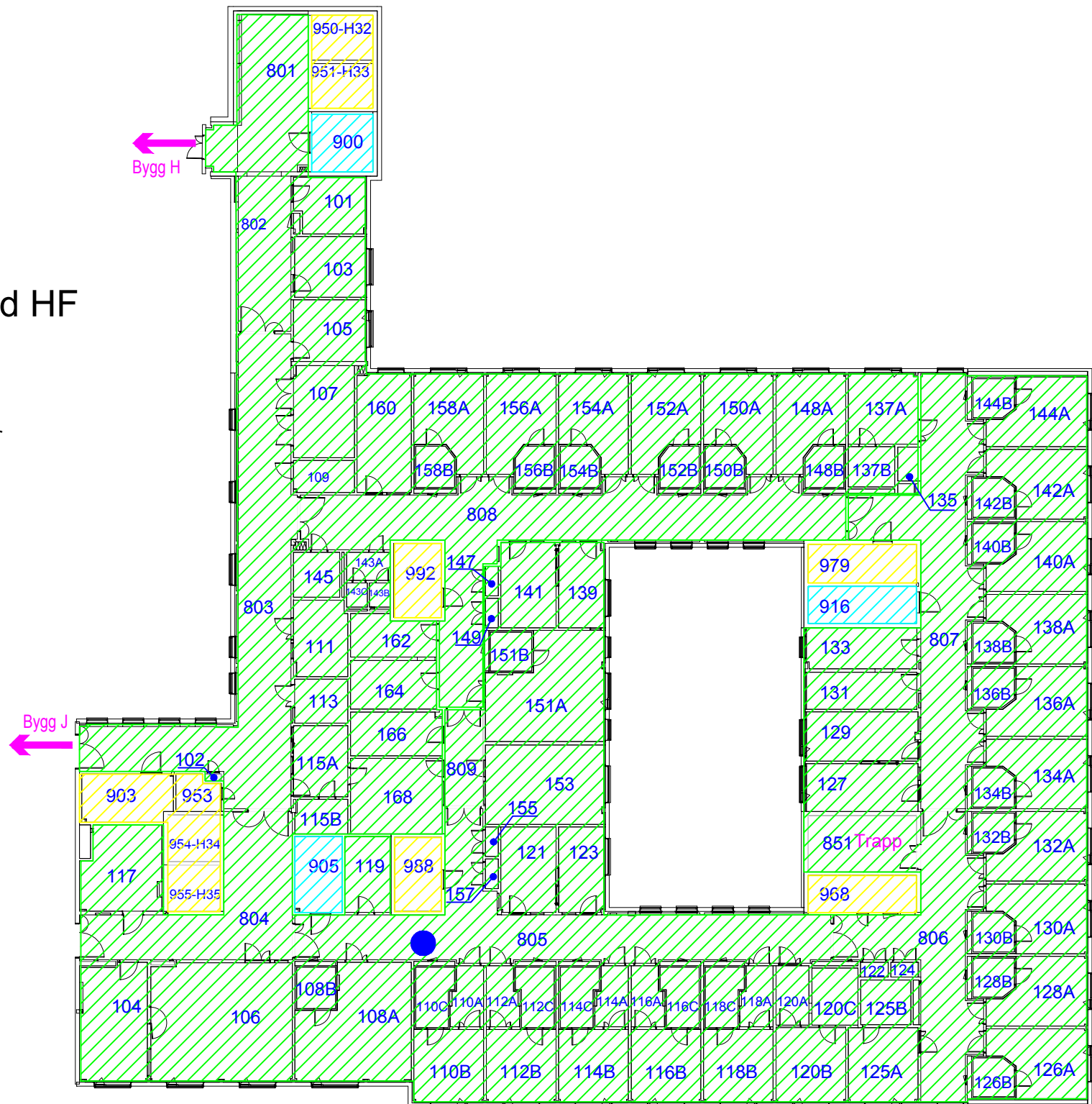


Sykehuset i Vestfold HF

Bygg E, femte etasje E5

Brannvernområder:


-  Kreft- og blodsykdommer
-  Byggteknisk
-  Elektroteknisk



Sykehuset i Vestfold HF

Bygg E, 6. etasje E6

Brannvernområder:

 Byggteknisk

